

# ONVATION™

A PARTNERSHIP FEATURING



## Delivering Smart Restroom **Leadership**

Kimberly-Clark Professional and GOJO Industries have collaborated across their technology platforms to bring you an industry-changing, innovative partnership that will transform the way you manage your restrooms.

Through this collaboration, the Onvation™ smart restroom management system now features the most trusted and customer-preferred Scott® and PURELL® products. This strategic partnership integrates two best-in-class brands with leading smart sensing technology to provide a single interface where you can proactively monitor restroom conditions to reduce customer complaints and increase tenant satisfaction.

Reduce restroom-related complaints and work orders by up to

**75%**

Proven to deliver up to

**80%**

in consumable waste reduction

**ROI** guarantee†

Backed by the brands you trust

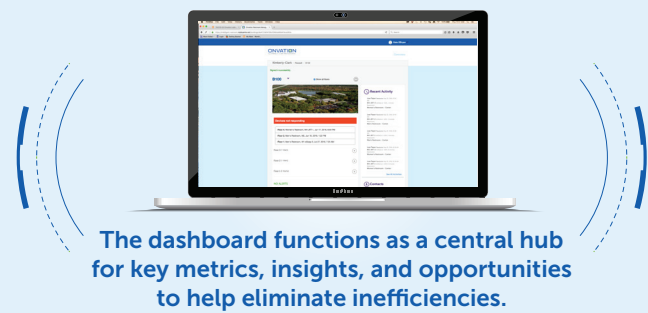
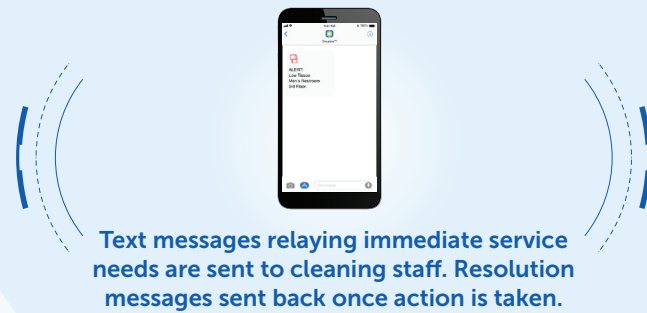




## How Does the Onvation™ System Featuring Scott® and PURELL® Brands Work?

Simple and easy-to-use, The Onvation™ Smart Restroom Management System includes:

- Low product alerts
- Dispenser maintenance data
- Dispenser consumption rate data
- Restroom traffic data



## Actionable Insights that Deliver Measurable Results

Gain total visibility into your restroom management operation and easily identify restroom activity by product consumption, traffic, average response time, or premature refill waste. The Onvation™ System Dashboard provides a complete picture of year-to-date savings, including dollars saved from prevented service requests and waste reduction, as well as custom insights that help guide best practices.

### Estimated Total Savings

- Maintain a running total of estimated year-to-date savings
- Calculate cost savings created by improved efficiency

### Custom Insights

- Best practices and actionable insights for restroom management optimization



### Alerts Resolved

- Monthly tracking of alert resolutions
- Analysis of monthly trends

### Restroom Activity

- Product Consumption**
- High level status on product consumption with month-over-month trend insights
- Total Traffic Visits**
- Monitoring of traffic month-over-month
- Consumption Activity on Top Traffic Floors**
- Monitor product consumption and number of visits per floor
- Consumption Activity by Gender**
- Isolate restroom insights by gender

### Restroom Management

#### Average Response Time

- Monitor month-over-month trends and average response time

#### Premature Refills

- View premature refill stats by product, floor, or wing; and analyze month-over-month trends

#### Waste

- See how much premature product refills are costing you
- Get month-over-month usage stats broken down by product



# Onvation™ Compatible Dispensing Systems



31501



25630  
25637  
25639

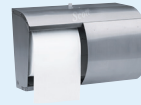
## Scott® Pro™ Mod® Hard Roll Towel System

### Advanced Design from the Most Preferred Brand

The Scott® Pro™ Mod® Hard Roll Towel System is the most efficient hard roll towel system on the market. It offers three towel options, including an 1,150' towel, and a stub-roll feature that delivers up to 9% annual savings. Its customizable settings help control consumption. Our Absorbency Pockets Technology helps reduce usage and costs, while delivering a superior hand-drying experience.

● Scott® Pro™ Mod® Hard Roll Towel Dispenser

📦 Scott® Pro™ High Capacity Hard Roll Towels



46383



04007

## Scott® Essential™ Coreless Standard Roll Bathroom Tissue System

### Say Goodbye to Waste

This two-ply, 1,000 sheet tissue uses proprietary coreless technology that eliminates waste. It's guaranteed to save at least 10% annually.<sup>5</sup> Optimize labor time and unwanted waste with a system that's easy to load and maintain. It has all the benefits of standard roll bathroom tissue with almost twice the length.

● Scott® Pro™ Coreless SRB Tissue Dispenser

📦 Scott® Essential™ Coreless SRB Tissue



7734-01



7771-02

## PURELL® ES8 Hand Hygiene System

### Hand Hygiene That's Always Ready Breakthrough Energy-on-the-Refill

**Technology** – Each refill comes with a coin cell battery that's integrated into the refill. Touch-free dispensing without the hassle of battery change outs.

**AT-A-GLANCE™ Refill Design** – Easily monitor product level with one quick glance, saving time and labor and eliminating complaints around empty dispensers.

● PURELL® ES8 Soap Dispenser

📦 PURELL® Professional HEALTHY SOAP®  
Naturally Clean Foam



8640-01



8671-04

## PURELL® CXR REDIFOAM™ Hand Hygiene System

### The Ultimate in Maintenance Ease

**Commercial-grade Construction** – Durable construction built to handle frequent use.

**Maintenance Ease** – eliminates the hassle and hazards of removing panels and crawling under counters to change out soap cartridges.

**Better Wash Experience** – Foam is created at the point of dispensing so the system doesn't lose its prime.

● PURELL® CXR REDIFOAM™ Dispensing Fixture

📦 PURELL® Professional REDIFOAM™ Soap

Contact your local Sales Representative at 844-896-7225 or visit [www.KCProfessional.com/Onvation](http://www.KCProfessional.com/Onvation) to sign up today and learn more about our ROI guarantee.



<sup>5</sup><https://www.kcprofessional.com/workplacesolutions/onvation/roi-guarantee>

GOJO, the inventors of PURELL® Hand Sanitizer, is the leading global producer and marketer of skin health and hygiene solutions for away-from-home settings. The broad GOJO product portfolio includes hand cleaning, handwashing, hand sanitizing, skin care formulas and surface sprays under the GOJO®, PURELL® and PROVON® brand names. GOJO formulations use the latest advances in the science of skin care and sustainability. GOJO is known for state-of-the-art dispensing technology, engineered with attention to design, sustainability and functionality. GOJO programs promote healthy behaviors for hygiene, skin care and compliance in critical environments. GOJO is a family enterprise headquartered in Akron, Ohio, with operations in the United Kingdom, France, Australia, Japan, Mexico, and Canada.

Kimberly-Clark warrants that its products (1) comply with K-C's standard specifications as of the delivery date to K-C's authorized distributors/direct purchasers (2) comply with all K-C labeling representations; and (3) are manufactured in compliance with all applicable federal, state, and local laws in effect at the time and place of manufacture of the products. THIS WARRANTY IS IN LIEU OF ALL OTHER WARRANTIES, EXPRESS OR IMPLIED, INCLUDING ANY WARRANTY OF MERCHANTABILITY OR FITNESS FOR A PARTICULAR PURPOSE. K-C is not liable for any kind of special, incidental, or consequential damages. K-C's liability for breach of contract, tort or other cause of action shall not exceed the product purchase price. Purchasers and users are deemed to have accepted the above warranty and limitation of liability, and cannot change the terms by verbal agreement or by any writing not signed by K-C. To the extent required by applicable law, K-C does not limit its liability for death/injury resulting from K-C's negligence.

®/™ Trademarks of Kimberly-Clark Worldwide, Inc. or its affiliates. Marques de commerce de Kimberly-Clark Worldwide, Inc. ou de ses sociétés affiliées. PURELL® is a registered trademark of GOJO Industries, Inc. © KCWW. T8CG7R 10/18